

FLOAT AND THERMOSTATIC STEAM TRAPS (Twin float steam trap) FLT 22 G/TW DN 80 - DN 100

DESCRIPTION

FLT 22 G/TW float and thermostatic (integral air vent) steam traps series are designed for all types of low and medium pressure steam heating and process equipment. Connections are flanged for horizontal .

MAIN FEATURES

Modulating discharge.
Discharges condensate at steam temperature.
Unaffected by sudden or wide load and pressure changes.
Excellent air discharge (by thermostatic air vent).

OPTIONS: Equalizing plug ,venting connection and drain plug (or blow-off valve on cover).

USE : Saturated and superheated steam.

AVAILABLE

MODELS : FLT 22G/TW

SIZES : DN 80 - DN 100

CONNECTIONS : Flanged DIN.Special flanges upon request.

INSTALLATION : Horizontal installation .

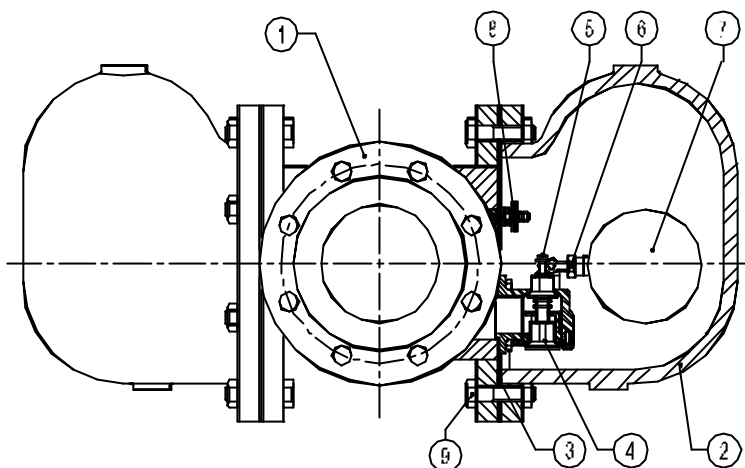
PMA :Max.allowable pressure 16 bar

TMA: Max.allowable temperature 250 °C

PMO: Max.operating pressure 14 bar

TMO: Max.operating temperature 198 °C

How to order: i.e. FLT22G/TW-10 DN100 DIN



MATERIALS:

POS.NR.	DESIGNATION	MATERIAL
1	BODY	STEEL
2	COVER	GGG40
3 *	GASKET	NON ASBESTOS
4 *	SEAT	AISI 410
5 *	VALVE	AISI 410
6 *	LEVER	AISI 304
7 *	FLOAT	AISI 304
8 *	AIR VENT	STAINLESS STEEL
9	BOLTS	STEEL 8.8

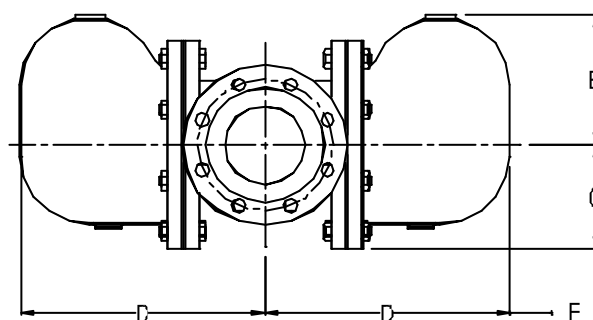
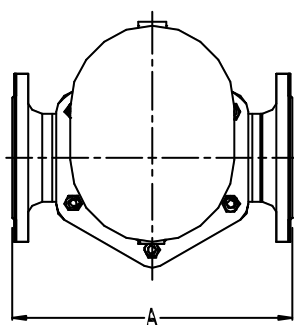
* AVAILABLE SPARE PARTS

Max.differential pressure:

FLT 22G/TW - 4.5 - 4.5 bar

FLT 22G/TW - 10 - 10 bar

FLT 22G/TW - 14 - 14 bar



FLOW RATE CAPACITY IN Kg/h

MODEL	SIZE	DIFFERENTIAL PRESSURE (bar)								
		0.5	0,7	1	1,5	2	4,5	7	10	14
FLT22-4,5	3"- 4"	15100	18100	22000	28000	31000	45000			
FLT22-10	3"- 4"	7800	8900	10000	12200	14200	20000	27500	32000	
FLT22- 14	3"- 4"	3800	4600	5400	6200	7200	10000	13800	16200	19600

DIMENSIONS (mm)

SIZE	A	B	C	D	E	WEIGHT
DN						Kg
80	350	141	123	300	200	69
100	350	141	123	300	200	71

All dimensions and weights are approximate.

Please consult factory for certified dimensions.