

FLOAT AND THERMOSTATIC STEAM TRAPS FLT 32 (Carbon Steel DN 40 - 50)

DESCRIPTION

FLT 32 float and thermostatic (integral air vent) steam traps series are designed for all types of low and medium pressure steam heating and process equipment. Connections are flanged for horizontal or vertical installation.

MAIN FEATURES

Modulating discharge.
Discharges condensate at steam temperature.
Unaffected by sudden or wide load and pressure changes.
Excellent air discharge (by thermostatic air vent).

OPTIONS: Equalizing plug ,venting connection and drain plug (or blow-off valve on cover).
USE : Saturated and superheated steam.

AVAILABLE

MODELS : FLT 32-4.5 - FLT 32-10 - FLT 32-14 - FLT 32-21

SIZES : DN40, DN50.

CONNECTIONS : Flanged DIN. Special flanges upon request.

INSTALLATION : Horizontal or vertical installation .
Flow from right to left FLT32 (R-L) or left to right (L-R).

PMA :Max.allowable pressure 40 bar
TMA: Max.allowable temperature 400 °C
PMO: Max.operating pressure 32 bar
TMO: Max.operating temperature 250 °C

How to order: i.e. FLT32-10 DN 40 DIN

DIMENSIONS (mm)

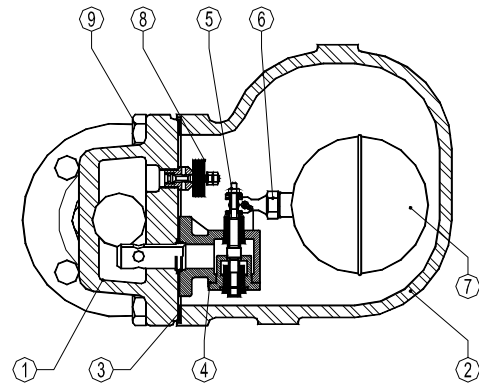
| SCREWED ENDS | | | | | | | DIN FLANGES | | |
|--------------|-----|-----|----|-----|-----|--------|-------------|-----|--------|
| SIZE | A | B | C | D | E | WEIGHT | F | B | WEIGHT |
| DN | Kg | | | | | | Kg | | |
| 40 | 210 | 248 | 79 | 208 | 131 | 16,9 | 230 | 248 | 20,3 |
| 50 | 210 | 248 | 79 | 208 | 131 | 17,5 | 230 | 248 | 22,2 |

All dimensions and weights are approximate.
Please consult factory for certified dimensions.

FLOW RATE CAPACITY IN Kg/h

| MODEL | SIZE | DIFFERENTIAL PRESSURE (bar) | | | | | | | | | | | | |
|-----------|------|-----------------------------|------|-------|-------|-------|-------|-------|-------|------|------|-------|-------|--|
| | | 0,5 | 0,7 | 1 | 1,5 | 2 | 4,5 | 7 | 10 | 12 | 14 | 16 | 21 | |
| FLT32-4,5 | 40 | 2400 | 2800 | 3400 | 3900 | 4500 | 7300 | | | | | | | |
| FLT32- 10 | 40 | 1500 | 1750 | 2000 | 2600 | 3000 | 4000 | 5400 | 6200 | | | | | |
| FLT32- 14 | 40 | 950 | 1100 | 1300 | 1600 | 1800 | 2600 | 3250 | 3900 | 4210 | 4950 | | | |
| FLT32- 21 | 40 | 950 | 1100 | 1300 | 1600 | 1800 | 2600 | 3250 | 3900 | 4210 | 4950 | 5000 | 5600 | |
| FLT32-4,5 | 50 | 7550 | 9050 | 11000 | 14000 | 15500 | 22500 | | | | | | | |
| FLT32- 10 | 50 | 3900 | 4450 | 5000 | 6100 | 7100 | 10000 | 13750 | 16000 | | | | | |
| FLT32- 14 | 50 | 1900 | 2300 | 2700 | 3100 | 3600 | 5000 | 6900 | 8100 | 9000 | 9800 | | | |
| FLT32- 21 | 50 | 1900 | 2300 | 2700 | 3100 | 3600 | 5000 | 6900 | 8100 | 9000 | 9800 | 10000 | 12050 | |

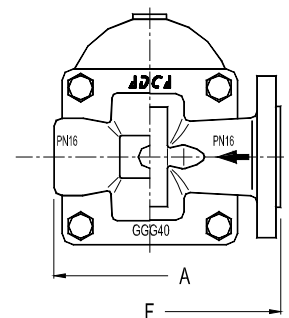
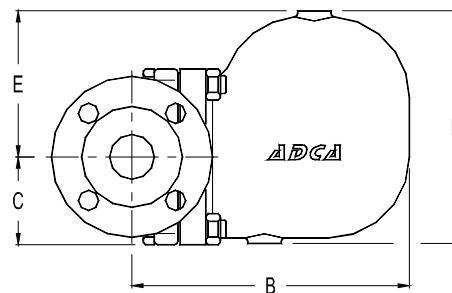
Recommended safety factor : continuous 1.2 - 1.5 ; discontinuous flow 2 - 3 .



MATERIALS:

| POS.NR. | DESIGNATION | MATERIAL |
|---------|-------------|-----------------|
| 1 | BODY | GP240 GH |
| 2 | COVER | GP240 GH |
| 3 * | GASKET | NON ASBESTOS |
| 4 * | SEAT | AISI 410 |
| 5 * | VALVE | AISI 410 |
| 6 * | LEVER | AISI 304 |
| 7 * | FLOAT | AISI 304 |
| 8 * | AIR VENT | STAINLESS STEEL |
| 9 | BOLTS | STEEL 8.8 |

* AVAILABLE SPARE PARTS



Max.differential pressure
FLT 32-4.5 - 4.5 bar
FLT 32 -10 - 10 bar
FLT 32- 14 - 14 bar
FLT 32- 21 - 21 bar