

## INVERTED BUCKET STEAM TRAPS IB 12

### DESCRIPTION

IB 12 series inverted bucket steam traps are recommended for all services where the most important requirements are overall operating efficiency and long, trouble-free service life.

They operate intermittently, either wide open or tightly closed and are therefore best suited for service at medium and high steam pressures. Connections are female screwed horizontal.

### MAIN FEATURES

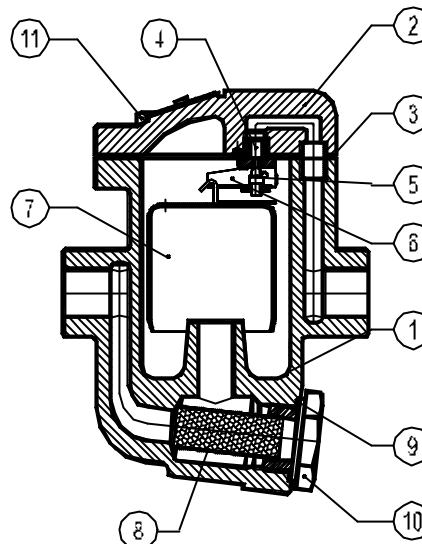
- Intermittent discharge.
- Discharges condensate at steam temperature.
- Unaffected by waterhammer and vibrations.
- Easy to maintain.
- Built-in strainer.

USE : Saturated and superheated steam.  
 AVAILABLE :  
 MODELS : IB12-4 ; IB12-8 - IB12-12.  
 SIZES : 1/2" and 3/4"  
 CONNECTIONS : Female screwed ISO 7/1 Rp (BS21)  
 INSTALLATION : Horizontal installation.  
 See IMI, installation and maintenance instructions.

MAX.D.PRESS.: IB12- 4 - 4 bar  
 IB12- 8 - 8 bar  
 IB12-12 -12 bar

PMA :Max.allowable pressure 16 bar  
 TMA: Max.allowable temperature 250 °C  
 PMO: Max.operating pressure 14 bar  
 TMO: Max.operating temperature 230 °C

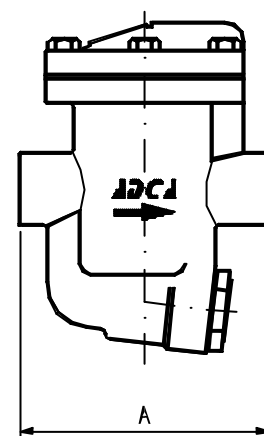
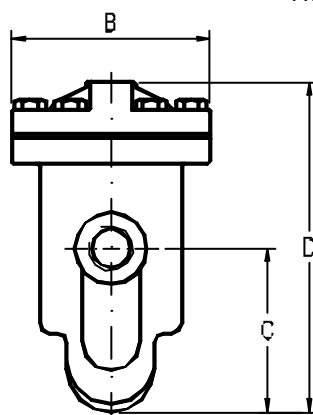
How to order : i.e. IB12-12 DN 1/2" BSP



MATERIALS:

POS.NR.	DESIGNATION	MATERIAL
1	BODY	GGG40
2	COVER	GGG40
3 *	GASKET	NON ASBESTOS
4 *	SEAT	AISI 410
5 *	VALVE	AISI 410
6 *	LEVER	AISI 304
7 *	BUCKET	AISI 304
8 *	STRAINER SCREEN	AISI 304
9	GASKET	316/GRAPHITE
10	PLUG	C22.8
11	BOLTS	STEEL 8.8

\* AVAILABLE SPARE PARTS



### FLOW RATE CAPACITY IN Kg/h

MODEL	SIZE	DIFFERENTIAL PRESSURE (bar)									
		1	2	3	4	5	6	7	8	10	12
IB12-4	1/2"-3/4"	280	390	470	530						
IB12-8	1/2"-3/4"	190	260	320	360	400	430	460	500		
IB12-12	1/2"-3/4"	160	220	260	290	320	360	370	400	440	490

DIMENSIONS (mm)					
SIZE	A	B	C	D	WEIGHT
DN					Kg
1/2"	130	102	85	170	3,9
3/4"	130	102	85	170	3,9

Recommended safety factor: continuous service = 1.2 - 1.5 ; discontinuous service = 2-3.