

CAST IRON PIPELINE Y STRAINERS IS 16 and IS 16F

DESCRIPTION

IS 16 Y cast iron strainers are applicable to all types of steam, water, oil and air systems. Their purpose is to protect traps, regulating valves, piping, etc. from dirt which are often times the cause of damage and consequently energy loss of fluid systems.

Connections are female screwed or flanged.

OPTIONS: Different screen aperture sizes.
Drain plug or drain valve in strainer cap.
Other sizes and materials upon request.

USE : Saturated steam, water, oil, air and other compatible fluids.

AVAILABLE MODELS :

IS 16 - Screwed model.
IS 16F - Flanged model.

SIZES : IS 16 - DN 1/2" up to 2".
IS 16F - DN 15 up to DN 100

SCREENS: 0.5mm aperture up to DN 2" / 50.
1.2mm from DN 2"/50.

CONNECTIONS: Female screwed ISO 7/1 Rp (BS21),
Flanged DIN. Special flanges upon request.

INSTALLATION: Horizontal or vertical downstream installation.
See IMI, installation and maintenance instructions.

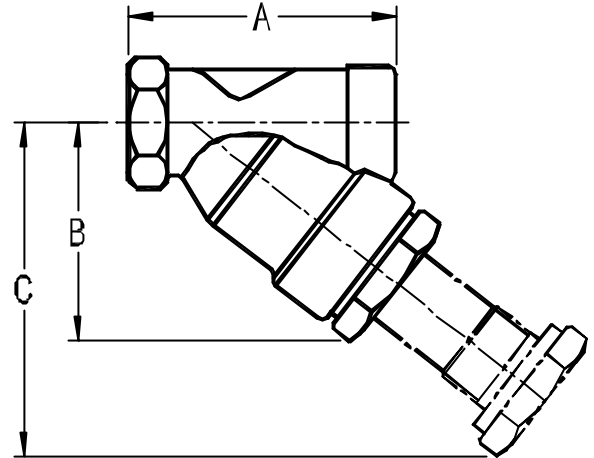
| | IS16 | IS16F |
|---------------------------------|--------|--------|
| PMA :Max.allowable pressure | 25 bar | 16 bar |
| TMA: Max.allowable temperature | 350 °C | 300 °C |
| PMO: Max. operating pressure | 17 bar | 13 bar |
| TMO: Max. operating temperature | 220 °C | 200 °C |

How to order : i.e. IS 16 DN 11/2" BSP

MATERIALS

| POS.NR. | DESIGNATION | MATERIAL | SPARE PARTS |
|---------|-----------------|----------------------|-------------|
| 1 | BODY | GGG40.3 (GG25 IS16F) | |
| 2 | CAP | BRASS (GG25 IS 16F) | * |
| 3 | GASKET | CAF | * |
| 4 | STRAINER SCREEN | AISI 304 | |
| 5 | BOLTS | STEEL 8.8 | |

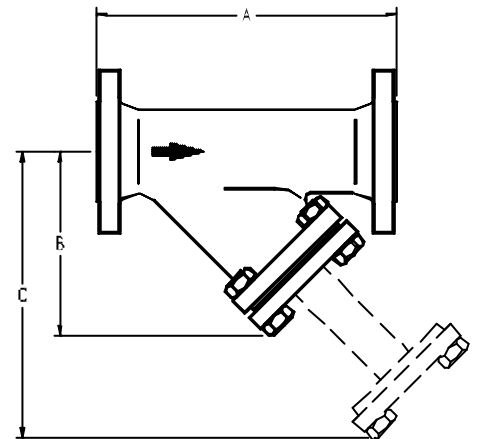
* AVAILABLE SPARE PARTS



MOD. IS 16

DIMENSIONS(mm) - IS 16

| SIZE DN | A | B | C | WEIGHT Kg |
|---------|-----|-----|-----|-----------|
| 1/2" | 82 | 52 | 77 | 0,6 |
| 3/4" | 100 | 70 | 100 | 1 |
| 1" | 115 | 76 | 121 | 1,5 |
| 1 1/4" | 140 | 107 | 132 | 2,5 |
| 1 1/2" | 157 | 121 | 176 | 3,6 |
| 2" | 198 | 198 | 258 | 5,7 |



MOD. IS 16F

DIMENSIONS(mm) - IS16 F

| SIZE DN | A | B | C | WEIGHT Kg |
|---------|-----|-----|-----|-----------|
| 15 | 130 | 60 | 100 | 2 |
| 20 | 150 | 70 | 120 | 3 |
| 25 | 160 | 80 | 140 | 3,5 |
| 32 | 180 | 85 | 150 | 5,5 |
| 40 | 200 | 120 | 190 | 6,5 |
| 50 | 230 | 135 | 220 | 9,5 |
| 65 | 290 | 185 | 310 | 15 |
| 80 | 310 | 205 | 340 | 22 |
| 100 | 350 | 245 | 410 | 32 |

