

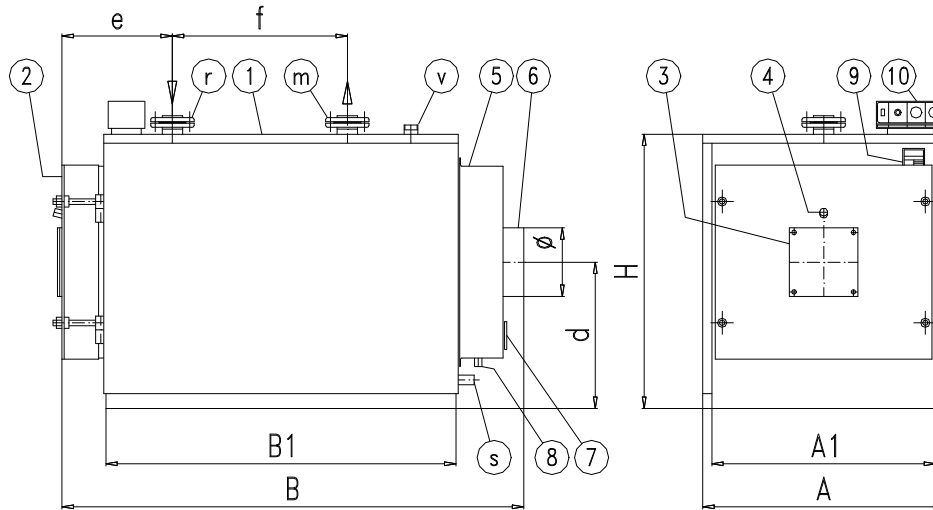


# SUPERAC-AR

Centrala termica pentru incalzire – Randament foarte bun

Heating boiler – High efficiency

★ ★ ★ - Directiva 92/42/CE – D.Lgs. 192-311



1 – corpul cazanului / boiler shell

2 – usa / door

3 – placa suport arzator/ burner plate

4 – lampa de semnalizare a flacarii/ sight glass

5 – camera de fum / smoke chamber

6 – evacuarea fumului/ smoke outlet

7 – usita de curatire/ cleaning door

8 – evacuarea fumului condensat / smoke condensate drainage

9 – placuta de identificare/ data plate

10 – panoul de control / control panel

m – tur incalzire / heating outlet

r – retur incalzire/ heating return

v – vas de expansiune / expansion tank

s – golire / blowdown

MODEL – TYPE	SUPERAC-AR	80	90	130	170	200	250	300	350	400	450	500	600	700	800	900
Puterea utilenominala	kW	81	91	132	170	203	253	304	354	398	455	505	610	715	820	920
Nominal capacity	kcal/hx1000	69,66	78,26	113,5	146,2	174,6	217,6	261,4	304,4	342,3	391,3	434,3	524,6	614,9	705,2	791,2
Puterea termica a focarului	kW	86,2	96,7	140	179,6	214	266	320	372	418	477	530	640	750	860	966
Furnace capacity	kcal/hx1000	74,13	83,16	120,4	154,5	184	228,8	275,2	319,9	359,5	410,2	455,8	550,4	645	739,6	830,8
Contaopresiune focar	mbar	0,4	0,5	0,9	0,9	1,2	1,8	2,5	3,3	2,7	3,2	3,7	3,6	4,5	4,4	4,8
Pieredri de sarcina pe partea apei *	mbar	3,4	4,3	9	5,5	7	13	18	23	13	17	21	13	19	25	32
Water side pressure losses																
Contin. de apa din cazan	dm <sup>3</sup>	119	119	155	228	228	285	276	329	402	402	476	697	795	733	817
Boiler water content																
Pres. Max. a cazanului	bar	5	5	5	6	6	6	6	6	6	6	6	6	6	6	6
Max boiler pressure **																
Dimensiuni Dimensions	A mm	790	790	790	940	940	940	940	940	1040	1040	1040	1240	1240	1240	1240
	B mm	1110	1110	1360	1405	1405	1655	1655	1905	1990	1990	2290	2345	2545	2545	2795
	H mm	880	880	880	990	990	990	990	990	1150	1150	1150	1280	1280	1280	1280
	A1 mm	750	750	750	900	900	900	900	900	1000	1000	1000	1200	1200	1200	1200
	B1 mm	760	760	1010	1010	1010	1260	1260	1510	1512	1512	1812	1814	2014	2014	2264
	d mm	460	460	460	510	510	510	510	510	595	595	595	640	640	640	640
	f mm	260	260	510	450	450	700	700	950	792	792	1092	974	1174	1174	1424
Racorduri Connections	r / m DN	2"	2"	2"	65	65	65	65	65	80	80	80	100	100	100	100
	v DN	1"1/4	1"1/4	1"1/4	1"1/2	1"1/2	1"1/2	1"1/2	1"1/2	2"	2"	2"	65	65	65	65
	s DN	3/4"	3/4"	3/4"	3/4"	3/4"	3/4"	3/4"	3/4"	3/4"	3/4"	3/4"	3/4"	3/4"	3/4"	3/4"
	Ø mm	200	200	200	220	220	220	220	220	250	250	250	350	350	350	350
Greut fara apa – empty weight	kg	250	270	310	460	480	540	550	610	870	890	940	1310	1380	1440	1620

\* Δt 15°C

\*\* la cerere si cu presiuni de 8 si 10 bar / on request also 8 and 10 bar

Cu panouri laterale / with sidely mattress

IVAR. INDUSTRY isi rezerva dreptul de a aduce modificarile pe care le considera necesare pentru a imbunatati productia.

Rev. 00 2013

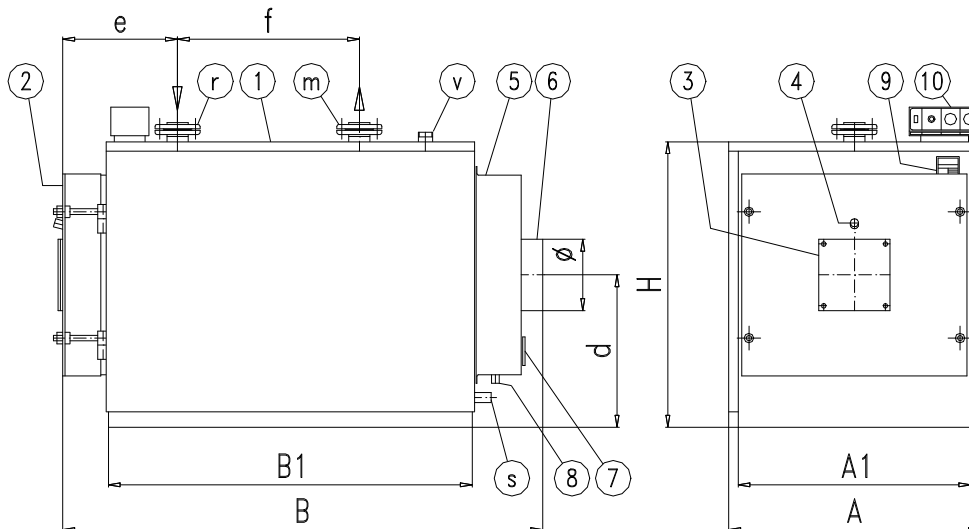
*I.VAR. INDUSTRY reserves the right to make any modifications considered necessary for improving production*



# SUPERAC-AR

Centrala termica pentru incalzire – randament f.bun  
*Heating boiler – High efficiency*

★★★ - Direttiva 92/42/CE – D.Lgs. 192-311



- 1 – corpul cazanului / boiler shell
- 2 – usa/ door
- 3 – placa suport arzator/ burner plate
- 4 – lampa semnalizare flacara/ sight glass
- 5 – camera de fum / smoke chamber
- 6 – evacuarea fumului/ stack
- 7 – usita de curatire / cleaning door

- 8 – evacuarea fumului condensat/ smoke condensate drainage
- 9 – placura de identificare/ data plate
- 10 – panoul de control/ control panel
- m – tur incalzire/ heating outlet
- r – retur incalzire/ heating return
- v – vase expansiune / expansion tank
- s – golire / blowdown

MODEL – TYPE	SUPERAC-AR	1100□	1300□	1640□	1850□	2050□	2580□	3100□	3600□
Puterea utila nominala	kW	1100	1300	1645	1850	2050	2580	3100	3610
Nominal capacity	kcal/h x1000	946	1118	1414,7	1591	1763	2218,8	2666	3104,6
Puterea termica a focarului	kW	1155	1365	1727	1942	2153	2709	3255	3791
Furnace capacity	kcal/h x1000	993,3	1173,9	1485,2	1670,1	1851,6	2329,7	2799,3	3260,2
Contrapresiune focar	mbar	5,4	5,6	5,8	6	6,5	6,8	7,5	8,4
Pierderi de sarcina pe partea apei *	mbar	29	40	33	40	45	50	70	92
Water side pressure losses									
Contin.de apa din cazan	dm <sup>3</sup>	1277	1372	2010	2125	2163	3155	3292	4839
Boiler water content									
Pres. max a cazanului	bar	6	6	6	6	6	6	6	6
Max boiler pressure **									
Dimensiuni Dimensions	A mm	1380	1380	1610	1610	1610	1800	1800	2000
	B mm	2950	3200	3245	3535	3535	3955	4255	4790
	H mm	1500	1500	1800	1800	1800	2000	2000	2210
	A1 mm	1380	1380	1610	1610	1610	1800	1800	2000
	B1 mm	2416	2666	2680	2970	2970	3320	3620	4024
	d mm	810	810	965	965	965	1070	1070	1700
	e mm	430	430	430	430	430	510	510	522
f mm	1700	1950	1440	1730	1730	1700	2000	2200	
Racorduri Connections	r / m DN	125	125	150	150	150	200	200	200
	v DN	80	80	100	100	100	125	125	125
	s DN	1”1/2	1”1/2	1”1/2	1”1/2	1”1/2	1”1/2	1”1/2	1”1/2
	∅ mm	400	400	450	450	450	500	500	600
Greut.fara apa– empty weight	kg	2200	2580	3300	3640	3710	5140	5480	7490

\* At 15°C      \*\* la cerere si cu presiuni de 8 si 10 bar / on request also 8 and 10 bar  
 IVAR. INDUSTRY isi rezerva dreptul de a aduce modificarile pe care le considera necesare pentru a imbunatati productia.  
 IVAR. INDUSTRY reserves the right to make any modifications considered necessary for improving production