



STEAM EQUIPMENT

STEAM INJECTORS SI 115

DESCRIPTION

The SI series steam injectors from ADCA are injection condensers. They ensure low noise and vibration and rapid heating of still or flowing fluids in basins and vessels due to direct steam injection.

Steam enters through the inlet housing, passes along the center of the heater, mixing with the cool water which is drawn in through radial holes.

Connections are female screwed.

MAIN FEATURES

Quiet operation.

Corrosion-resistant.

No moving parts.

OPTIONS: Complete system including vacuum breaker and self operated controller.
Different capacities and design available under request.

USE: Direct steam injection heating systems.
See IMI installation and maintenance instructions.

AVAILABLE

MODELS: SI-115

SIZES: 1/2"

CONNECTIONS: Female screwed ISO 7/1 Rp (BS21)

INSTALLATION: Horizontal installation.

LIMITING

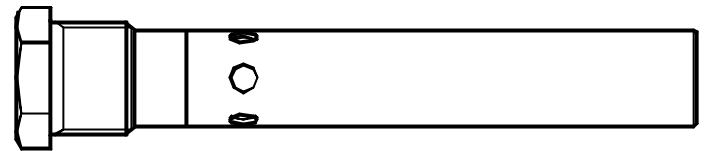
CONDITIONS: Body design conditions : PN 25

Max. Operating pressure : 17 bar

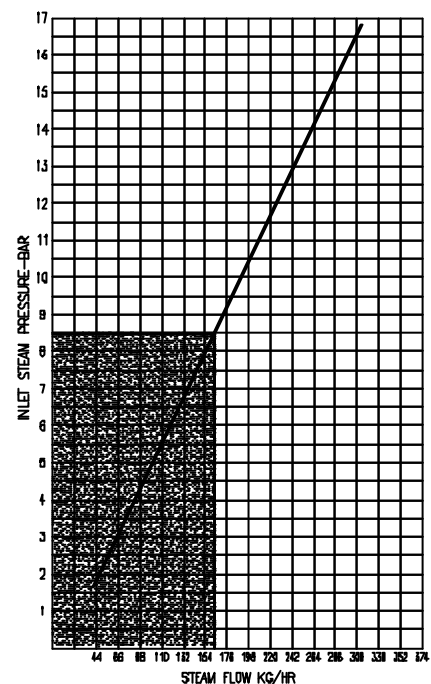
Max. recommended water temp: 95 °C

MATERIALS: Austenitic stainless steel throughout.

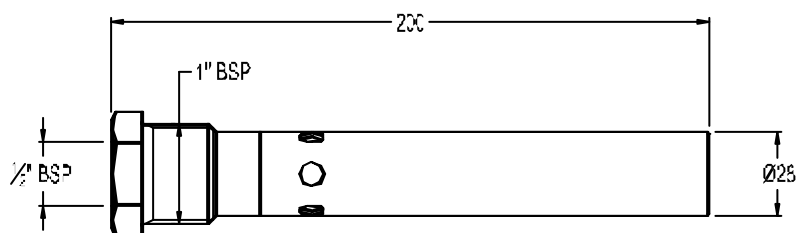
How to order: i.e. SI-115 DN 1/2" BSP



CAPACITY CHART
(With the vessel at atmospheric pressure)



Selection under shadow area is recommended for quietest operation.



Example : We require to inject 230 Kg/hr of steam with a pressure of 5,5 bar. From the injector capacity chart we see that at 5,5 bar the injector will pass 110 Kg/hr and 230 divided by 110=2,09 .

Two injectors will barely cope, so, we recommend installing three injectors, which will meet the demand.