

WAFER-TYPE NON - RETURN VALVE RD 40 DN15 - DN100

DESCRIPTION

The RD40 all stainless steel disc check valve has a compact design and was specially designed for use with steam and hot condensate. Connections are flanged.

MAIN FEATURES

Low pressure drop.
Simple and compact design.
Overall lengths according to DIN 3202 part 3-K4

OPTIONS: Soft sealing :
EPDM (E), NBR (N), VITON (V), PTFE (T).
Inconel springs

USE : Saturated steam, water and other gases (Group 2) compatible with the construction .

AVAILABLE

MODELS : RD 40
SIZES : DN 15 to DN 100
CONNECTIONS : Sandwiched between flanges as per DIN or ANSI.
INSTALLATION : Horizontal or vertical installation .
See IMI, installation and maintenance instructions.
RATING : PN 25 / PN 40
LIMIT OF OPERATION: As per DIN 2401
How to order : i.e. RD 40 DN 40

CE MARKING (PED - European Directive 97/23/EC)

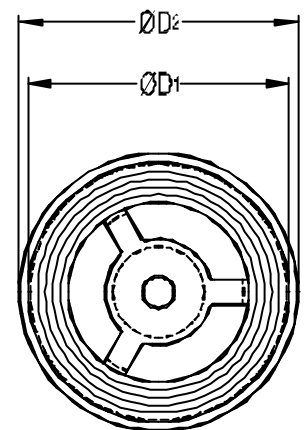
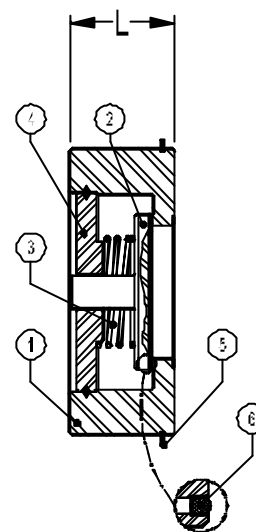
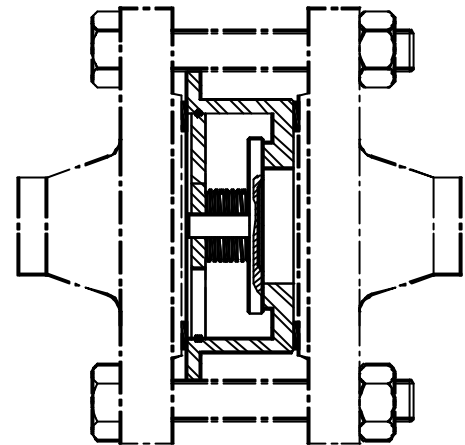
PN 25 : PN 40 :
DN15 to DN32 DN15 to DN25 : SEP - Article 3, paragraph 3.
DN40 to DN100 DN32 to DN80 : Category 1 (CE marked).

MATERIALS

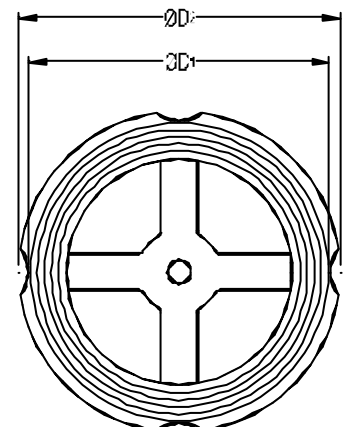
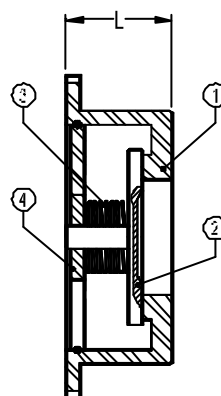
POS.NR.	DESIGNATION	MATERIAL
1	BODY	AISI 316
2 *	DISC	AISI 316
3 *	SPRING	AISI 316
4	STAR	AISI 316
5	CENTERING RING	AISI 304
6 *	SOFT SEAL	See options

* AVAILABLE SPARE PARTS

DIMENSIONS (mm)									
DN	15	20	25	32	40	50	65	80	100
D1	43	53	64	76	86	96	115	132	152
D2	51	61	71	82	92	108	126	141	167
L	17	20	23	28	32	40	46	50	60
Kg	0,18	0,2	0,25	0,5	0,7	1,3	1,7	2,8	4,5



DN 15 - DN 50



DN 65 - DN 100